



**THE PRESBYTERIAN CHURCH OF CHESTNUT HILL**

8855 Germantown Avenue  
Philadelphia, PA 19118

*Address service requested.*

**Mark your calendar! April 30 is Pledge Commitment Sunday**

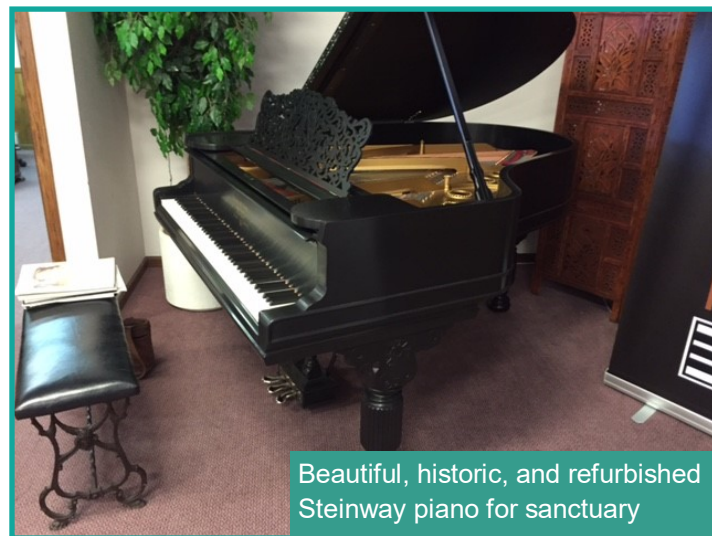
*Keeping the Faith Keeps Us Growing, cont. from page 1*

• **A 10% mission tithe** supported capital grants to neighbors in need, including Philadelphia Interfaith Housing Ministry, Broad Street Ministry, West Kensington Ministry, Whosoever Gospel Mission, and One House at a Time, enabling these organizations to expand and enhance their mission outreach.

However, as any homeowner knows, unexpected expenses often get in the way of best-laid plans. In 2015, our aged boiler breathed its last, resulting in an unplanned expenditure well in excess of \$400,000.

In order to fund this expense, the congregation: (1) voted to use the capital pledges already made in the spring of 2013 to cover the cost of a new boiler; and (2) instructed the session to undertake another capital campaign to replace the funds and complete the projects proposed in the *Strengthen Our Foundation/ Transform Our Future* campaign. At our annual meeting on February 19, 2017, we challenged one another to raise an additional \$600,000 to keep faith with our original vision.

March and April will be filled with conversations and presentations about the vision, the goal, and our individual commitments to *Keeping the Faith*. We look forward to joining you on this journey, which will culminate with a Pledge Commitment and Celebration Sunday on April 30. —By Liz and Jeff Podraza and Tom McClintic, *Keeping the Faith Campaign Co-Directors*



Beautiful, historic, and refurbished Steinway piano for sanctuary



**2017 PCCH CAPITAL CAMPAIGN**



*“I have fought the good fight, I have finished the race, I have kept the faith.”*  
II Timothy 4:7

## Keeping the Faith Keeps Us Growing

**W**ith each renovation of our church home, we have welcomed people seeking a community that values openness and inquiry, beauty and grace, justice and self-giving love. The building renovations undertaken over the last two decades have transformed our congregation and established this church as a thoughtful and vibrant community of faith, a patron of the arts, a center for community life, and a people committed to working in the world for the common good.

We undertook our last Capital Campaign, *Strengthen Our Foundation/Transform Our Future*, in early 2013. To date, we have received 95% of the over \$1.2 million pledged, a testament to the congregational support and love for our home, our vision, and mission. Look what we have accomplished to date:

• **The Burleigh Cruikshank Memorial Chapel** has been transformed into a beautiful and flexible new space for Dinner Church, music and arts performances, meetings, and church school worship. A handicap-

accessible restroom was also added in the upper Strouse hallway next to the chapel.

• **Energy-efficient windows** have been installed in all but the Strouse education building and along the back stage wall in Widener Hall. Combined with a zoned heating system, the resulting energy savings (\$30,000 last year) not only helps our church’s bottom line, but also makes us better stewards of the environment. An energy-efficient re-lamping of Widener and the Sanctuary were also completed.

• **The Youth Group** space in Strouse was renovated, creating a more welcoming and usable space for our next generation.

• **Significant and necessary repairs** were made to the outside chapel steps, the choir room floor, the sanctuary ceiling, the gutters, the driveway and parking lot, and the Mander organ.

• **New refrigerator and freezer** were installed in the kitchen.

Continued on back page



# Capital Campaign Q&A

## See Designs of our Planned Renovations

### Q. Why are we conducting this campaign?

In 2013, we committed almost \$1.2 million in pledges to *Strengthen our Foundation/Transform Our Future*, a capital campaign with an exciting list of building renovations. Shortly thereafter, the church's boiler died. Because the expected cost of a new energy-efficient boiler was \$400,000 to \$500,000, the congregation voted to postpone many of the planned renovations and use the money from pledges already made to cover the cost. Four years later, at the annual meeting on February 19, 2017, the congregation voted to continue the transformation of our church building with this campaign.

### Q. How much money are we trying raise?

We hope to raise approximately \$600,000 with pledges that will be made on April 30, 2017, and completed two years later. We will not incur debt, but only undertake projects when we have the money in hand to do them.

### Q. How were these needs determined?

In 2012, the Stewardship Strategic Planning committee created a five-year plan for annual giving, planned giving, and capital giving at PCCH. Over 30 members participated and presented the session with recommendations. The congregation approved the campaign and its scope on February 19, 2012. The projects in *Keeping the Faith* are the projects postponed in 2013 with two additions: the repair of the steeple roof and glass doors behind the wooden doors at the main sanctuary entrance.

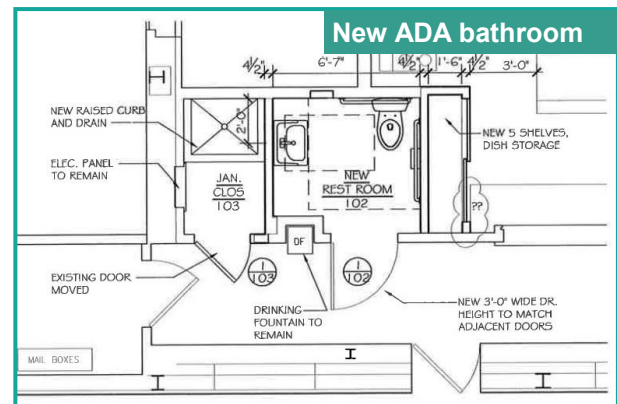
Everyone will be invited to a smaller group discussion in March or April where questions can be asked and priorities discussed. Once pledges are made, the session will prioritize the completion of projects based on structural needs, available funds, timely disruption of the building, and feedback from members.

### Q. Why are we not designating 10% of the campaign proceeds to mission?

The title on the money we borrowed from our first campaign to pay for the boiler has already been distributed to fund our mission partners' capital needs. In setting the goal for *Keeping the Faith*, the session decided not to ask for a tithe on what is essentially money replacing money spent on the boiler. Even so, we all feel a strong sense of responsibility to use our resources for the future of our surrounding community and the mission of the church in the world. Therefore, any additional gifts raised beyond the goal will be dedicated to capital mission projects.

### Q. How can I make my pledge?

Pledges will be received in worship on **Sunday, April 30**. Normally, pledges will be fulfilled over two years and may be paid quarterly, annually, or in a one-time gift. If a longer pledge period is better for you, that is also an option.



# Transforming our Space for a New Future Together



Cost	Projects and Descriptions
\$ 99,700	<b>Renew the kitchen</b> to be a place where the preparation of meals becomes an occasion for fellowship, not only for our members, but also for the many community groups that have come to call our church their home.
\$ 40,000	<b>Add a handicapped restroom</b> in the hallway between the main office and the kitchen
\$146,500	<b>Renovate our entrances and signage</b> to be more hospitable and accessible entry points for the stranger, better reflecting the welcoming nature of this congregation.
\$ 21,000	<b>Finish the lower level hallway</b> with drywall, a dropped ceiling, and new lighting
\$ 40,000	<b>Upgrade our pianos</b> with seed money for an exceptional, historic reconditioned Steinway in the sanctuary
\$213,650	<b>Install energy-efficient windows</b> in the Strouse wing and Widener Hall back stage.
\$ 10,000	<b>Repair steeple roof</b>
\$ 29,150	<b>Fees and contingencies</b> for overruns